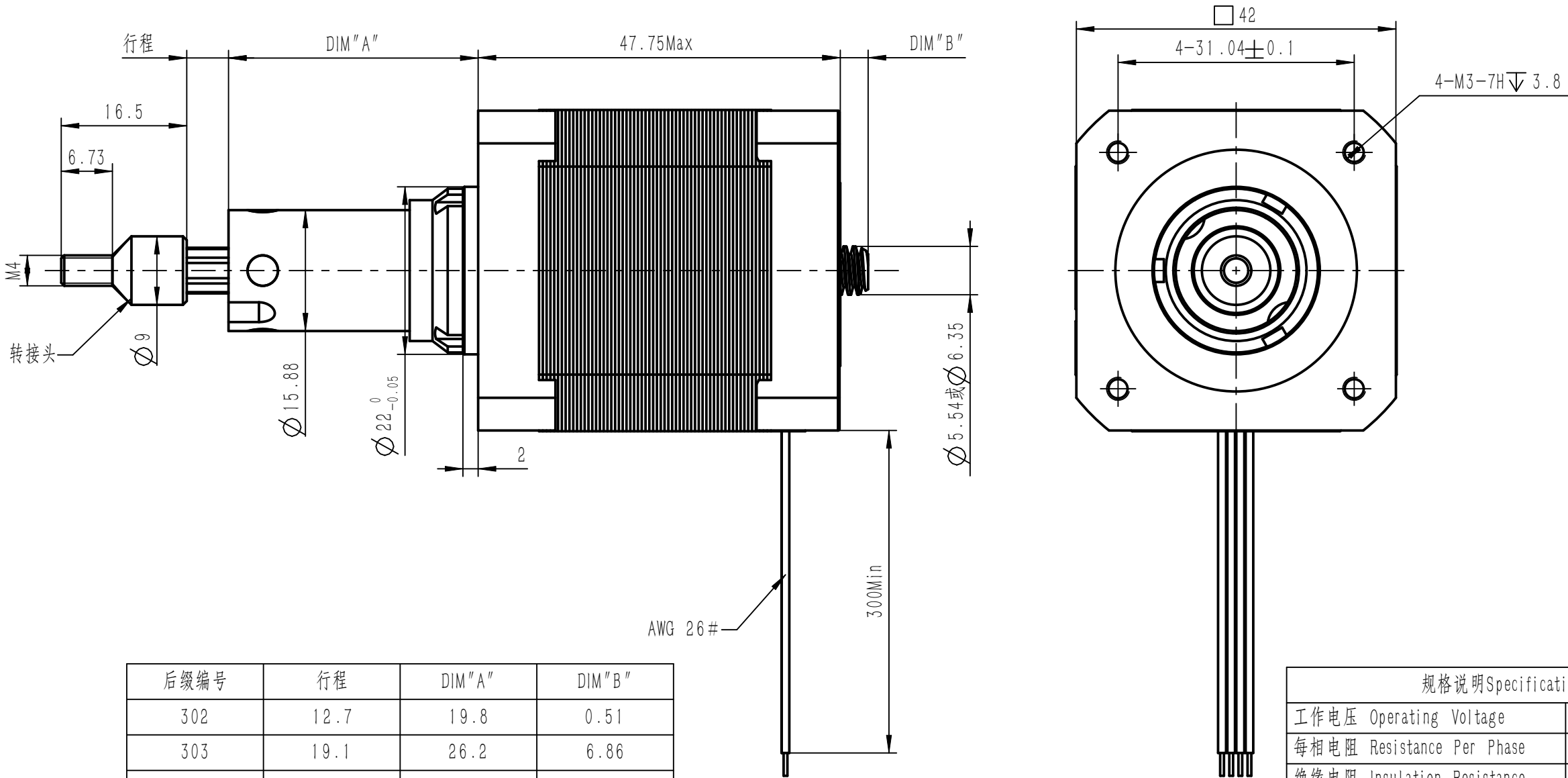
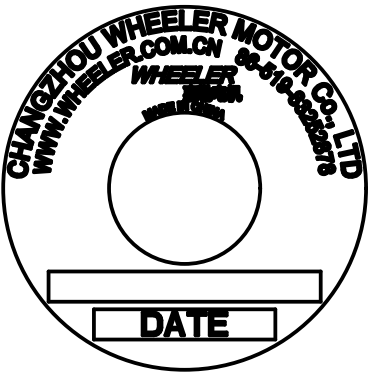


REVISIONS			
REV.	DESCRIPTION	DATE	ECO. NO.
-	Release for production	30-Jun-21	



后缀编号	行程	DIM "A"	DIM "B"
302	12.7	19.8	0.51
303	19.1	26.2	6.86
304	25.4	32.5	13.21
305	31.8	38.9	19.56
306	38.1	45.2	25.91
307	50.8	57.9	38.61
308	63.5	70.6	51.31

规格说明Specification	
工作电压 Operating Voltage	??? V
每相电阻 Resistance Per Phase	??? OHMS \pm 10%
绝缘电阻 Insulation Resistance	20M OHMS
功耗 Power Consumption	??? W
最小推力 Minimum Force(300PPS)	??? N
导程 Lead	??? mm
步长 Step	??? mm
步距角 Step Angle	1.8 $^{\circ}$
额定电流 Rated Current	??? A
工作温度 Operating Temperature	-40 $^{\circ}$ to +55 $^{\circ}$
环境温度 Storage Temperature	-40 $^{\circ}$ to +100 $^{\circ}$
其它 Others	



描 图

描 校

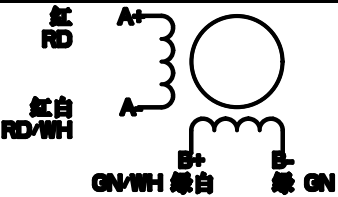
底图存放

签 字

日期

客 户
Customer

Wiring Diagram 接线图



Exciting Sequence 励磁顺序

伸出	→				
A+	+	-	-	+	
A-	-	+	+	-	
B+	+	+	-	-	
B-	-	-	+	+	
缩回	←				

STANDARD BLOCK TOLERANCES:UNLESS OTHERWISE SPECIFIED

		INCH		MM
DECIMALS:	X	$\pm .020$	X	± 0.38
DECIMALS:	X.X	$\pm .015$	X.X	± 0.25
DECIMALS:	X.XX	$\pm .010$	X.XX	± 0.13
DECIMALS:	X.XXX	$\pm .005$	X.XXX	± 0.013
DECIMALS:	X.XXXX	$\pm .0005$		
ANGLES:		$\pm 2^{\circ}$		

Drawn By	SY
Date	30-Jun-21
	Unit mm

常州惠勒电机有限公司
Changzhou Wheeler Motor CO., LTD
常州市新北区新桥工业园区镜湖路28号
No.28,Jinghu Road,Xinqiao Industrial Park,
Xinbei District,Changzhou,213125
TEL:0519-83252878, 85102562
FAX:0519-83252220
EMAIL:info@wheeler.com.cn
www.wheeler.com.cn

Scale: A4 Rev: - Sheet 1 of 1

WHEELER™

常州惠勒电机有限公司

DWG.NO.

42CC4X-X-XXX-XXX